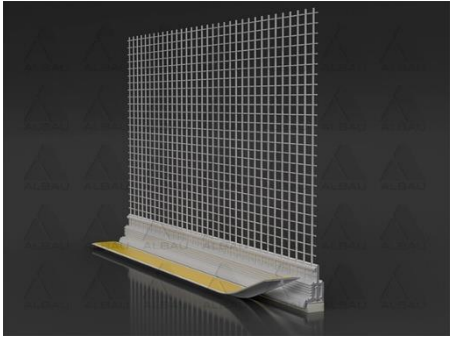
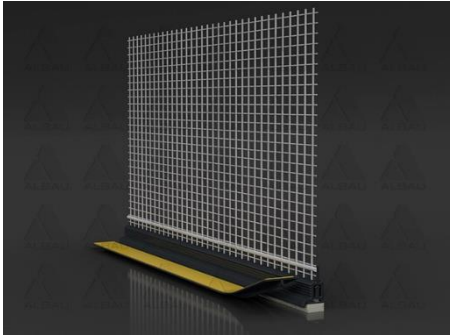
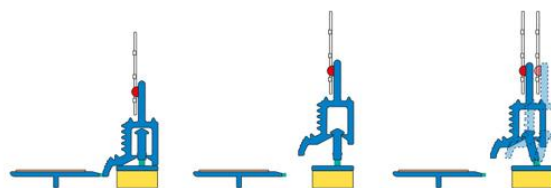
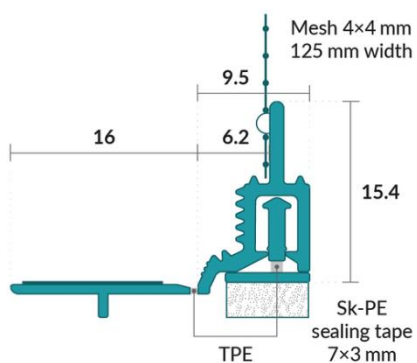




W35-PRO / 3D telescopic window reveal profile with mesh


| | <i>SKU</i> | <i>Bar code</i> | <i>Color</i> |
|--|---------------------|-----------------|--------------|
|  | APU-W35-pro(W)-2.4 | 7640301852132 | White |
|  | APU-W35-pro(AG)-2.4 | 7640301852149 | Anthracite |



Application:

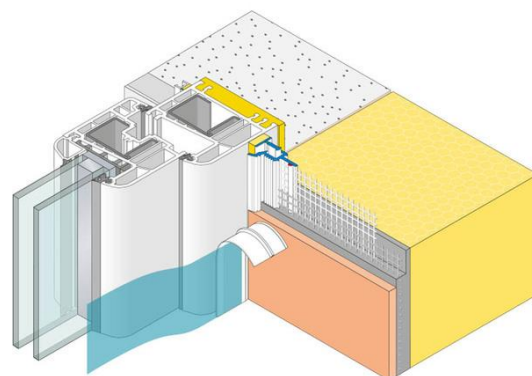
- The profile is used in compound with thermal insulation systems.
- In front of the reveal insulation the profile is stuck flush to the structural element there. After completion of the plastering work it forms a clean and reliable termination of the plaster with a shadow gap.



| | | |
|---|-------------------------------------|-------------|
|  | ALBAU SIA | V 03 |
| | Product technical data sheet | v1 |
| | | Page 2 |
| | | Pages 2 |

Properties:

- The profile comes with a self-adhesive PE foam tape, which ensures a watertight, lasting seal.
- The integrated telescopic mechanism can absorb movements in any direction in the area around the joint.
- The profiles can be joined overlapping where the elements abut.
- There is a fabric window reveal bead welded onto the profile.
- Each bar has a fabric overhang on one side of 10cm in the lengthways direction.
- There is a piece of self-adhesive tape on protective flap to secure the third-party protective film. This protects the window during the plastering work.
- After completion of these tasks, the protective flap is pulled off and what is created is a clean edge to the plaster.



Technical data:

| | |
|-----------------|--|
| Material | Rigid PVC (manufactured according to DIN-16941) TPE (manufactured according to DIN-16941) |
| Length | 2,4 m |
| Protective flap | Detachable with soft TPE connection and double-sided adhesive tape |
| Features | Telescopic bar with flexible TPE connection |
| Seal | PE foam tape 7 x 3 mm |
| Mesh | Min. 160 g/m ² approved for compound with heat insulation systems. 12,5 cm wide; hole size 4 x 4 mm Ultrasonic welded |
| Inspections | VDPM leaflet: Class A with adhesive connection Ö-Norm 6400-2: Class III |

Recommendations:

- Before installing perform an adhesion test.

Storage:

- Store in dry place.
- Store in a horizontal position.

Manufacturer: APU AG, Rheinweg 7, 8200 Schaffhausen, Switzerland

Distributor: Albau SIA – 20k-1-14, Talivalza street, Riga, LV-1006, Latvia, Reg.No. 40103561205



www.albau.eu



www.xbau.eu