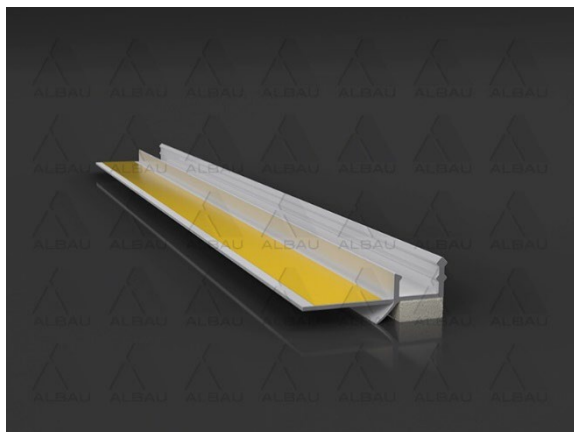
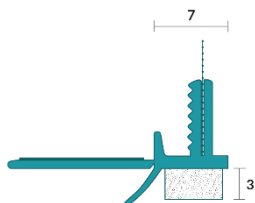
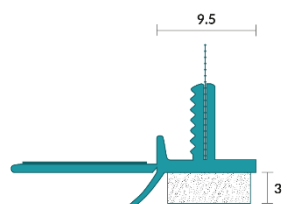
	ALBAU SIA	<b>V 03</b>
	<b>Product technical data sheet</b>	v1
		Page 1
		Pages 2

**Window reveal profile with covering lip**



**Application:** creates a perfect finish and a flexible joint between plaster and window/door frames.

SKU	EAN	Width	Dimensions
ALB-PW-06-L-26	4752265004762	6 mm	
ALB-PW-09-L-26	4752265004779	9 mm	

**Technical data:**

Material	PVC
Length	2,6 m
Pieces per transport package	30 pcs.

**Advantages:**

- A covering lip on the visible side of the profile creates an aesthetically neat transition.
- The covering lip protects the flexible PE tape against dust and dirt settling.
- The snap-off part of the profile is intended for use as a protective sheet, which protects from dirt and potential damage to the window or door when applying plaster.



**MADE IN EUROPE**


Distributor: Albau SIA – 20k-1-14, Talivalza street, Riga, LV-1006, Latvia, Reg.No. 40103561205



[www.albau.eu](http://www.albau.eu)



[www.xbau.eu](http://www.xbau.eu)

	ALBAU SIA	<b>V 03</b>
	<b>Product technical data sheet</b>	v1
		Page 2
		Pages 2

- The profile allows the plaster to be applied levelled quickly on jambs and sills.
- Application for interior plaster.

**Recommendations:**

- To attach firmly, remove the protective film from the window or door frame.
- The frame base must be even, dry, free of adhered pollution, dust, and grease.
- Use scissors intended for working with plastic profiles to shorten the profile.
- The snap-off part of the profile should be partially snapped off (approx. 2 cm in the direction of the profile), before applying to the frame.
- To make a corner connection cut the profile at a 45° angle.
- Remove the protective layer from the PE tape, attach the profile to the frame and press it down firmly along its entire length.
- Remove the protective film from the snap-off part of the profile after the adhesive has reacted and hardened (24 hours) and carefully attach the protective film, which protects the window or door when applying plaster.
- Apply the plaster so that the entire space of the profile's "U" groove is filled in, level off the front edge of the profile.
- Remove the snap-off part of the profile and protective sheet as soon as possible after applying the plaster.
- Installation must be performed within the temperature (window frame and air temperature) range of +5 °C to +30 °C.

**Storage:**

- Store in a horizontal position.
- The profiles need to be stored in a dry place, in the temperature of -5°C to +40°C.
- Maximum recommended storage time is 18 months.



**MADE IN EUROPE**

Distributor: Albau SIA – 20k-1-14, Talivalza street, Riga, LV-1006, Latvia, Reg.No. 40103561205



[www.albau.eu](http://www.albau.eu)



[www.xbau.eu](http://www.xbau.eu)