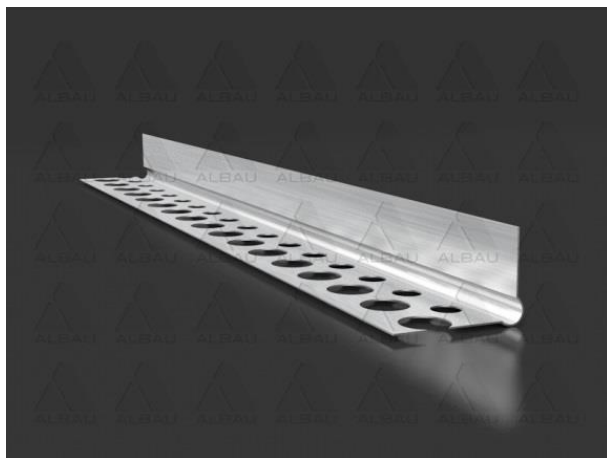


## PL 04AL / Aluminum stop bead



**Application:** stop bead is a component of gypsum board system that protects corners and joints of drywall. It is made of aluminum (Al) required for installation of Drywall system

### Advantages:

- Easy to install;
- Clean finish, especially with different or uneven surfaces;
- Leaves no edges when stopped;
- Can be attached to all gypsum plasterboards;
- Generally used for the forming of straight lines.

### Technical data:

Product code	EAN	Material	Dimensions	Length	Package
ALB-PL-04AL-25	4751023401485	Aluminum	23 x 13 mm	2,50 m	200 pcs.

### Installation tips:

- The stop beads have a perforated, recessed edge and are used where the edge of the building board is not exposed;
- Fixed to the sheet of building board with an adhesive or staples, with the finishing coats bonding into the building board and feathering up to the bead nib;
- Ideally used for door jambs and window returns.

### Storage:

A horizontal storage position is recommended. The profiles need to be stored in a dry place the temperature range of -5°C to +40°C. Maximum recommended storage time is 24 months.



### MADE IN EUROPE

Distributor: Ltd "Albau" – Ritvari, Rumbula, Stopinu district, LV-2121, Latvia. Reg.No. – 40103561205



[www.albau.eu](http://www.albau.eu)



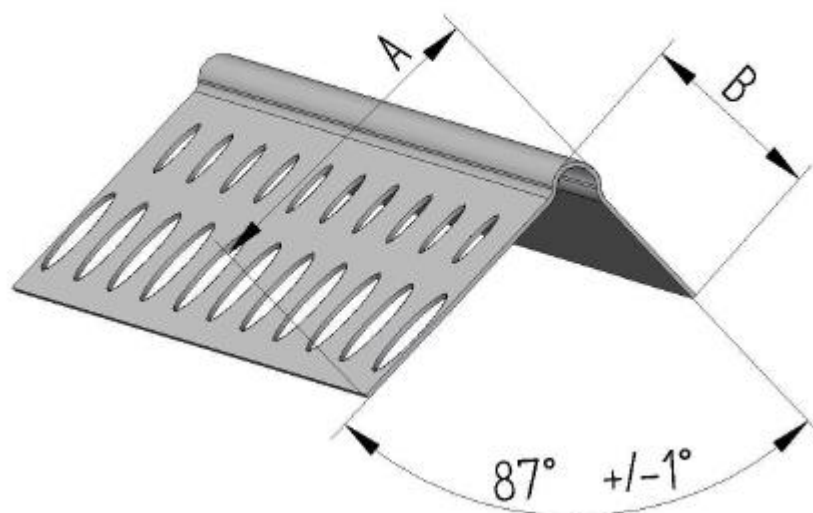
[www.shop.albau.eu](http://www.shop.albau.eu)

## PL 04AL / Aluminum stop bead

### Technical information

Type

ALB-PL-04AL-25



Dimensions[mm]	A B	
	LPUS Alu 23x13	22 1,1
	Tolerance ±	1,0 0,2
Profile length [m]	2,5	
Length tolerance [mm]	± 5	
Thickness (mm)	0,40	
Thickness tolerance [mm]	± 0,02	
Material	Aluminum	


**MADE IN EUROPE**

Distributor: Ltd "Albau" – Ritvari, Rumbula, Stopinu district, LV-2121, Latvia. Reg.No. – 40103561205


[www.albau.eu](http://www.albau.eu)

[www.shop.albau.eu](http://www.shop.albau.eu)