

# Installation Instructions

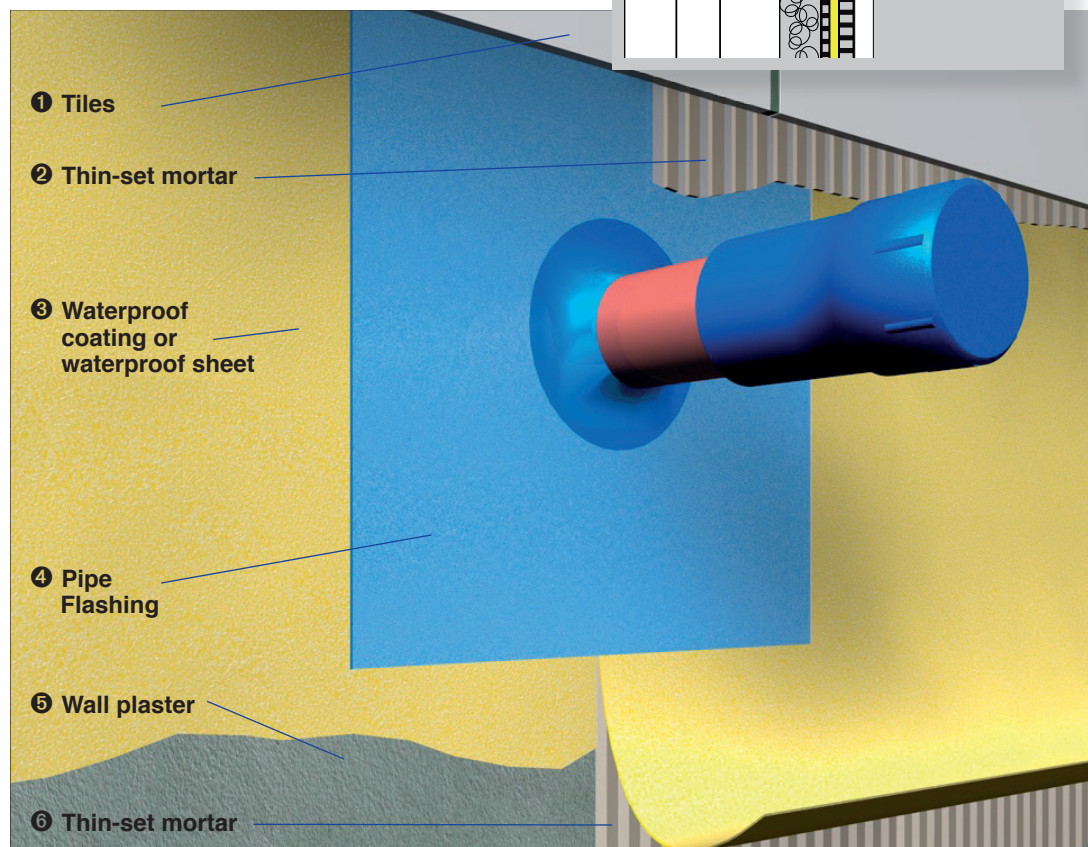
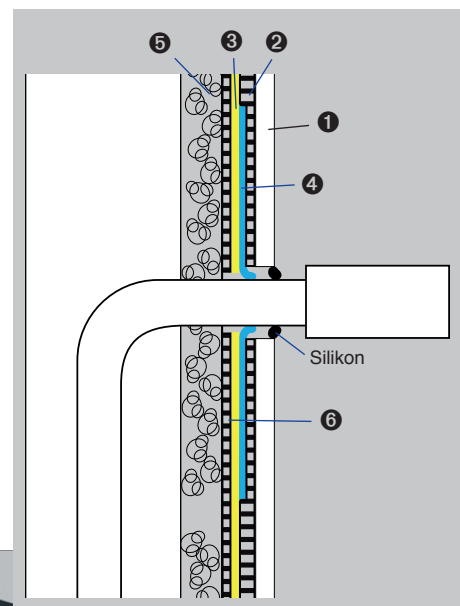
## Pipe flashings

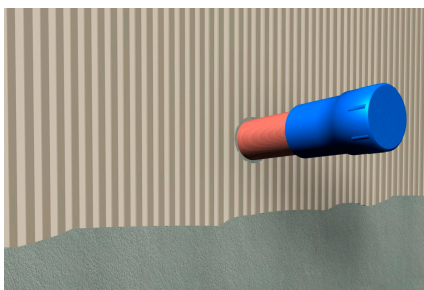
### Product description

- Waterproof pipe flashing and sealing for areas where waterproofing is necessary.

### General

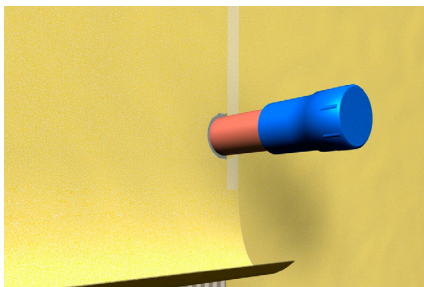
- The wall should be sealed with a suitable water-proofing sheet or coating.





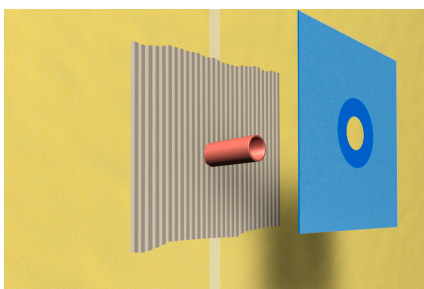
### Step 1

- Prepare the thin-set tile mortar according to manufacturers instruction (stir approx 2 min.) and apply afterwards with a 5/32" x 5/32" (4 mm x 4 mm) tooth trowel.
- It is important to achieve an even thickness.



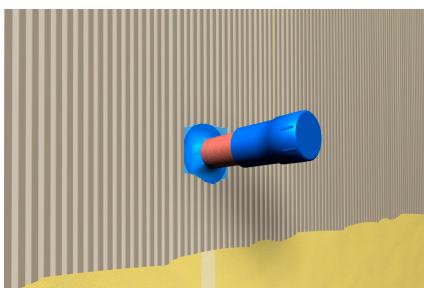
### Step 2

- Apply the waterproof coating or sheets according to the job specification – domestic or commercial buildings – on the wall from top to the bottom and from the center to the edges.



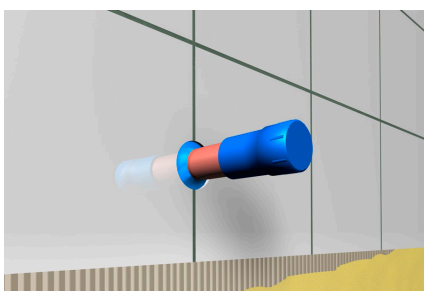
### Step 3

- Apply tile mortar or suitable sealant (depending on specification) with a 5/32" x 5/32" (4 mm x 4 mm) tooth trowel around the pipe. Pull the pipe flashing – without damaging it – over the pipe and embed firmly into the mortar/sealant. Avoid creases, air pockets and damages to the flashing.



### Step 4

- Without further delay tile mortar can be applied on the wall as well as on top of the pipe flashing.



### Step 5

- Tiling can begin immediately.

The above technical data represent average values. The technical information and application instructions are based on our experience and present knowledge. However, it is each users own responsibility to make trials with the original substrates in order to verify the suitability of our products for the intended purpose, taking into consideration all application related parameters. Please contact us if you have any further questions.