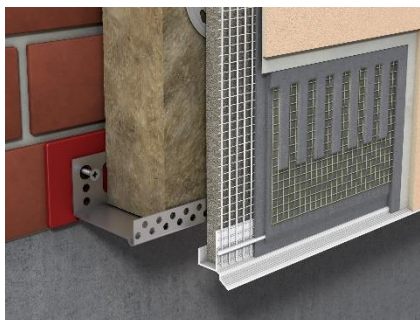
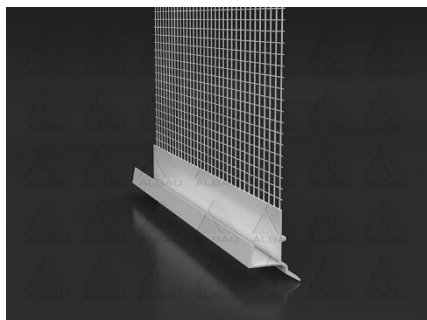
	ALBAU SIA	V 03
	Product technical data sheet	v1
		Page 1
		Pages 1

ALB / Base profile with mesh



Description:	Base profile with mesh and drip edge for external boards in systems in ventilated facades
Order No.:	ALB-VF-DB06-25
Bar code:	4751023403748
Material:	<ul style="list-style-type: none"> PVC – resistant to alkali and UV Glass fibre mesh
Length:	2500 mm
Quantity per package:	25 pcs.
Rendering system thickness:	6 mm
External board thickness:	12,5 mm
Mesh fixation method:	Fixation with plastic rod, which is absolutely inert in contact with alkali and temperature changes.

Features and benefits:

- The mesh is welded to the plastic profile – thermal joint;*
- The pronounced shape of the drip edge ensures perfect water drainage, eliminates capillary effects;*
- Invisible drip edge;*
- The sophisticated shape of the drip edge ensures precise application of plaster layers with constant thickness;*
- Reinforcement of the edges – protection against mechanical damage.*

Instruction for use:

Fit the bead on the edge of the external board with the thickness of 12,5 mm. The bead is intended especially for the bottom edge but can also be used on vertical edges or the upper edge. Apply plaster under the bead mesh and press it into the plaster. Remove and level the excess plaster outside the mesh with a trowel. Follow the application of the rendering system and finish the layers at the drip edge.

Storage: in dry place, recommended to store in horizontal position. Packed in paper boxes.

Warning: the specified product dimensions are nominal and may range within the permitted manufacturing tolerances.

MADE IN EUROPE

Distributor: SIA "Albau" – Ritvari, Rumbula, Stopinu district, LV-2121, Latvia, Reg.No. – 40103561205



www.albau.eu



www.xbau.eu

