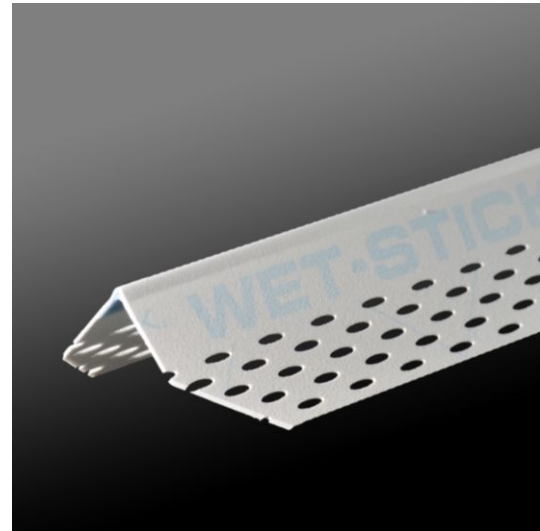
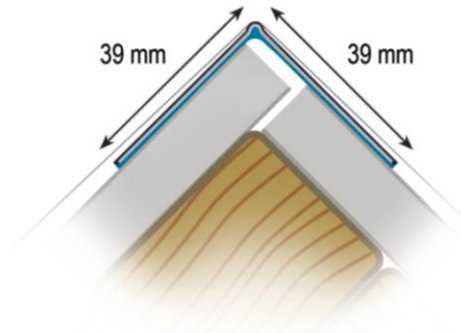


Product data sheet

Status: 28.02.2019 | 21:02

Item no.37321



Designation	Composite corner bead "Wet-Stick 90" for dry lining Water activatable, self-adhesive, bead for 90° outs. corner
Description	Self-sticking composite profile with a water-activatable adhesive side for the production of precise edges in the drywall construction. The adjusted angle allows an expeditious treatment on 90° outside edges. The adhesive side becomes active by spraying with water. The profiles can be mounted thus quickly, precisely and easily and can be reworked further 5 to 10 minutes. Inaccurate cut edges or offset joints can be concealed and don't have to be covered up separately. . Excellent adhesion of the filler as a result of the completely fibre-coated surface of the composite profile.
Line of Business	Plaster
Productclass	Composite profiles
Productgroup	Profiles
Plaster thickness	1,0 mm
Material thickness	0,8 mm
Product length	274 cm
Packaging Unit	50 STB / 24 CAR
Application Areas	For the use on gypsum plasterboards in the drywall construction, for the production of straight and precise inside and outside edges. The PVC core provides exceptional edge strength and durability, even in high traffic and busy areas.
Underground	The underground has to be sustainable, solid, clean and dry. ATTENTION! Only use the profiles on clean and unprimed gypsum boards.
Revision	Reworkable with a suitable filling compound, ca. 5 to 10 minutes after the bonding. Putty the composite to the head of the profile.
Consumption	The consumption of filling compound depends on the structure of the surface and the absorpency of the underground as well as the qualities of the filling compound. Compared to conventional filler profiles, the material input becomes reduced.
Tool	For ensuring an optimal contact pressure, use the outside edge roller WSR 1474.
Disposal	The waste of the composite profiles can be disposed with the residual waste.
Storage	Store it cold, dry and protected from moisture. Ground-level!

PROTEKTORWERK
Florenz Maisch GmbH & Co. KG
Postfach 1420, D-76554 Gaggenau
Viktoriastr. 58, D-76571 Gaggenau

Tel. +49 7225 977 - 0
Fax +49 7225 9 77 - 111
info@protektor.com
www.protektor.com



Product data sheet

Status: 28.02.2019 | 21:02

Item no.37321

Commentaires / characteristics

The adhesive side (blue) of the edge profile becomes active by spraying with water. Putting the profile until the head of the profile.
Please notice the treatment note in the technical datasheets!
Notice the additional treatment notes and the datasheets of the used filling compound.
outside edge roller WSR 1474, extension rod EP 1478

This product data sheet corresponds to the current state of development of our products and loses its validity upon publication of a new edition. Make sure you are using the latest edition of this information. Warranty and liability are based on delivery according to our general. Terms and conditions. Please observe the application assembly and storage guidelines.

All statements without guarantee. Reserve technical changes. Product illustrations may differ from the delivery product. Tender specifications, installation instructions and performance declarations (if required by law) can be found on our homepage. Please respect the environment for a proper disposal!

PROTEKTORWERK
Florenz Maisch GmbH & Co. KG
Postfach 1420, D-76554 Gaggenau
Viktoriastr. 58, D-76571 Gaggenau

Tel. +49 7225 977 - 0
Fax +49 7225 9 77 - 111
info@protektor.com
www.protektor.com

