

HAND MORTAR PUMPS

PREMIUM QUALITY



EASY TO USE!

Hand mortar pumps can be used without electricity: for cavity filling, low-pressure injection, for joints, filling mortar into door or window frames, for anchorholes, pumpable mortars/grouts up to 4 mm grain size (model 1-5), and much more.

The inner sealing set ensures a leak free over head working. The mixed material is sucked into the hand mortar pump by pulling the trigger back and now is the hand mortar pump ready to work.

1... 2.. 3...

MIXING

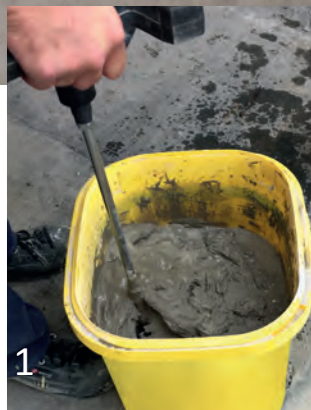
FILLING THE TOOL

FILLING THE HOLE



ORIGINAL

PREMIUM QUALITY



1



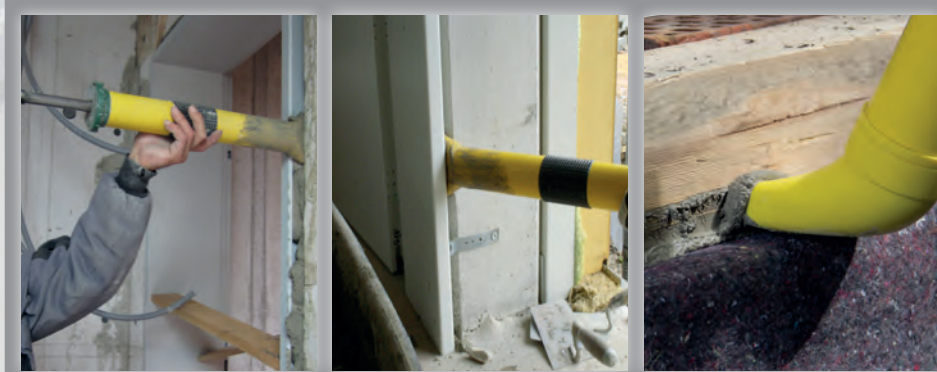
2



3

Model 1 - 5

Mortars/grouts up to 4mm grain size



Application areas:

Working with mortar/grouts up to 4mm grain size

- filling door or windows frames
- cavity filling
- working with filler
- plasters, renders
- concrete cosmetics
- fire protection mortar
- mortar/grouts for frames
- and much more



Description:

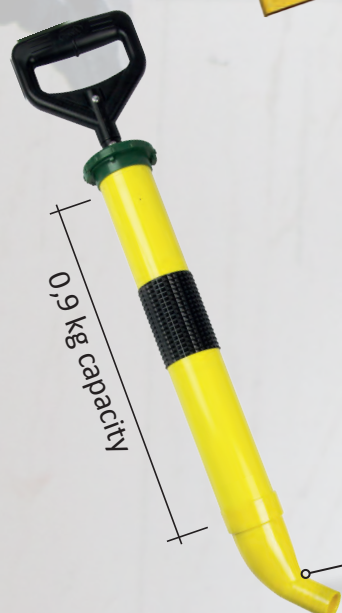
Model 1

Details:

Long version, slot 18 mm

Order No.:

BM13300012



Description:

Model 2

Details:

Angel 30°, hole dia 24 mm

Order No.:

BM13300016



Description:

Model 3

Details:

Angel 30°, slot 18 mm

Order No.:

BM13399915



Description:

Model 4

Details:

Short version, slot 10 mm

Order No.:

BM13300010



Description:

Model 5

Details:

Short version, slot 18 mm

Order No.:

BM13300011



Model 6 - 7

Filling hollow spaces



Application areas:

Working with thin mortar/grouts, water tight mortars, mineral suspensions

- filling hollow spaces
- concrete cosmetics
- frame mortars / grouts
- swelling mortars
- Injections crèmes
- and much more



Description:

Model 6

Details:

Angel 30°, GEKA incl. hose dia 13

Order No.:

BM13300016-GK



1"



dia 13



Description:

Model 7

Details:

Angel 30°, GEKA incl. hose dia 25

Order No.:

BM13300016-GK10



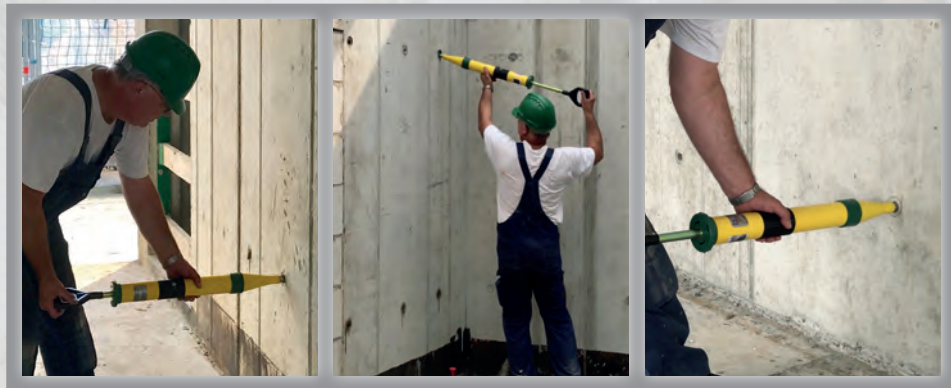
1"



dia 25

Model 8

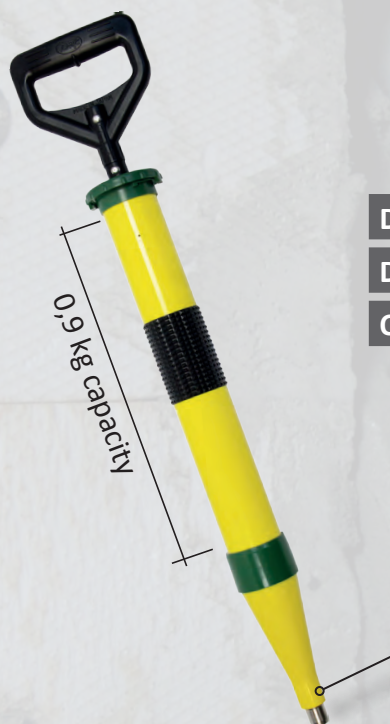
Filling spacer holes, anchor holes



Application areas:

Working with thin mortar/grouts up to 2mm grain size

- filling spacer holes
- filling anchor holes
- joint mortars/grouts
- Injection crèmes
- and much more



Description:

Model 8

Details:

Straight, stainless steel nozzle 16mm

Order No.:

BM13300019



SS 16mm

Model 9 - 10

Basic hand mortar pumps with GEKA



Application areas:

Our proven and well known hand mortar pumps with GEKA connection.

Working with thin mortar/grouts, mineral suspensions.

for example, filling mortar in hollow spaces, joint mortar, frame mortar/grouts, filling mineral injection mortars/grouts, and much more.



Description:

Model 9

Details:

Straight, connection GEKA 1/2"

Order No.:

BM13300020



Description:

Model 10

Details:

Angel 30°, connection GEKA 1"

Order No.:

BM13300021

Price net:

127,00 €



Accessories

for basic hand mortar pumps



Description:

Hose DN 13 - GEKA

Details:

Hose extension 40 cm dia 13

Order No.:

BM13300001



Description:

Hose DN 25 - GEKA

Details:

Hose extension 40 cm dia 25

Order No.:

BM13300002



Description:

Low pressure coupling - GEKA

Details:

LP coupling - Inner 8mm

Order No.:

BM133*****



Description:

Joint nozzle set - GEKA

Details:

Nozzle set 5 pieces

Order No.:

BM13300004



FOR PROFESSIONALS



- ✓ **Up to 60% time saving**
-> reduce labour costs
- ✓ **Favorable in purchasing**
-> amortized after the first assembly
- ✓ **Durable plastic**
-> lightweight - 0,88 kg up to 1,10 kg own weight.
- ✓ **Application from 0 up to 4mm grain size**
-> easy working with rough fire protection mortar
- ✓ **100% tight**
-> thanks to our special construction.



distribution / service:

b&m GmbH - Material und Technik
www.handmoertelpumpen.de

