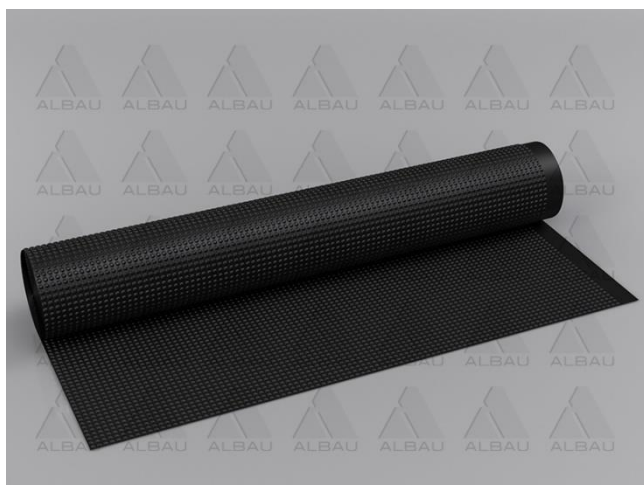
	ALBAU SIA	V 03
	Product technical data sheet	v1
		Page 1
		Pages 2

4-320 / Drainage membrane



SKU	Bar code	Width
ALB-DM-4-320-1/20	4751023407203	1 m
ALB-DM-4-320-1.5/20	4751023407401	1,5 m
ALB-DM-4-320-2/20	4751023407418	2 m

Certified according to CE standard EN 13967

Technical data:

Material:	HDPE
Colour:	Black
Number of dimples:	2500 dimples/m ²
Dimple height:	4 mm
Length:	20 m
Compressive strength:	320 kN/m ²
Temperature resistance:	-30°C to +80°C
Biological properties:	Resistant to bacteria and fungi, rot-resistant, root-proof
Physiological properties:	Safe for drinking water
Fire behaviour:	Class E

Advantages:

Albau's drainage membrane 4-320 is an effective protection and drainage system for horizontal indoor applications. The membrane consists of a high-quality HDPE dimpled sheet. This new flat dimpled sheet has been specially developed for flooring applications to protect against rising damp and contamination. Moreover, it can also be used as a substitute for lean concrete sub-bases. The special low dimple shape (approx. 4 mm) minimises changes in floor level, while still providing a sufficient air gap to achieve vapour pressure compensation.

The drainage membrane is an affordable alternative to lean concrete sub-bases. Because the dimples securely separate the foundation wall from the ground, the dimpled sheet takes on the function of lean concrete. This makes it possible to work in any weather; the waiting time typical for the hardening of lean concrete is eliminated.

MADE IN EUROPE

Distributor: SIA "Albau" – Ritvari, Rumbula, Ropazi district, LV-2121, Latvia, Reg.No. – 40103561205




www.albau.eu



www.xbau.eu



	ALBAU SIA	V 03
	Product technical data sheet	v1
		Page 2
		Pages 2

Installation instructions:

- Roll out the drainage membrane on a level, stable surface, allowing the sheets to overlap lengthwise and crosswise by 20 cm; it is recommended that the rolls be as wide as possible.
- The drainage membrane offers protection against rising damp. It also prevents cement paste from flowing downwards.
- It is suitable for both new buildings and renovations; the sheeting can also be used in conjunction with various floorings. It is also possible to combine it with sound insulation or different floor heating systems.
- After installing the membrane, put concrete spacers diagonally directly on membrane - under reinforcement mesh, and the cement mass can be poured.



Accessories:

ALB-BAT-20/30
ALB-GLUE-WM/310

4751023407333
4751023407302

Butyl adhesive tape
Elastic glue for waterproofing membrane



MADE IN EUROPE

Distributor: SIA "Albau" – Ritvari, Rumbula, Ropazi district, LV-2121, Latvia, Reg.No. – 40103561205



www.albau.eu



www.xbau.eu