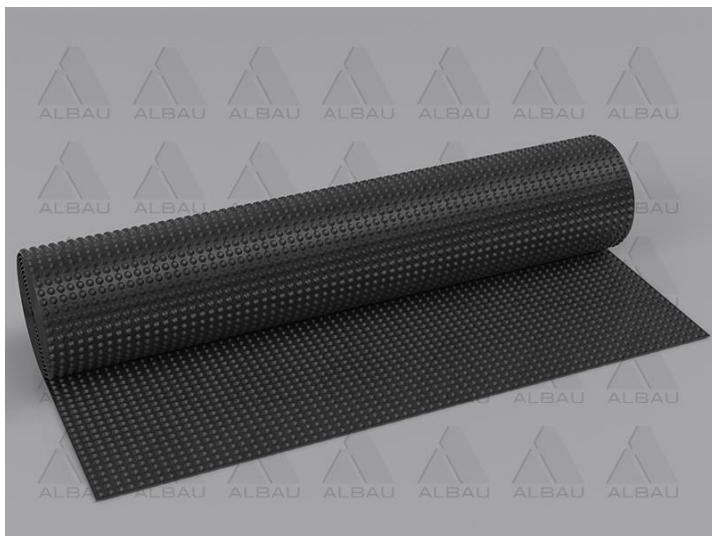
	ALBAU SIA	V 03
	Product technical data sheet	v1
		Page 1
		Pages 2

8-200 / Drainage membrane



<i>SKU</i>	<i>Bar code</i>
ALB-DM-8-200	4751023407272

Certified according to EN 13967
CE marked

Made in Europe

Technical data:

Material:	HDPE
Colour:	Black
Number of dimples:	1710 dimples/m ²
Dimple height:	8 mm
Compressive strength:	200 kN/m ²
Water flow capacity in the plane, rigid – soft; i = 1.0 rigid – soft, i = 0.01 rigid – soft, i = 0.02 rigid – soft, i = 0.03	approx. 2.52 l/s·m at 20 kPa approx. 0.16 l/s·m at 20 kPa approx. 0.26 l/s·m at 20 kPa approx. 0.34 l/s·m at 20 kPa
Water storage:	3.0 l/m ²
Roll width:	2.0 m
Roll length:	20 m
Air volume between the dimples:	5.5 l/m ²
Temperature resistance:	-30°C to +80°C
Chemical properties:	Chemical-resistant
Biological properties:	Resistant to bacteria and fungi, rot-resistant, root-proof
Physiological properties:	Safe for drinking water
Fire behaviour:	Class E

MADE IN EUROPE


Distributor: SIA "Albau" – Ritvari, Rumbula, Ropazi district, LV-2121, Latvia, Reg.No. – 40103561205



www.albau.eu



www.xbau.eu

	ALBAU SIA	V 03
	Product technical data sheet	v1
		Page 2
		Pages 2

Advantages:

Drainage membrane 8-200 is a water-storing, perforated dimpled membrane and is regarded as an ideal solution for extensive roof greening. Compared to normal dimpled membranes, the drainage membrane 8-200 offers a high drainage and water storage capacity and assumes the function of a protective and water storage layer in green roofs.

The 8 mm dimples have a water storage capacity of approx. 3 l/m². The pressure resistance of approx. 200 kN/m² offers a high level of security, corresponding to a compressive strength of approx. 20 tonnes per m². The 8 mm dimpled membrane also offers a high drainage capacity. The plant substrate can be applied directly on the dimpled membrane after laying a separate geotextile.

Thanks to the perforation, the water-storing drainage membrane is permeable and can also be used for inverted roofs. This prevents a film of water from forming on the inverted roof insulation. In walkable areas without vegetation, no geotextile is used.

The base layer and the bedding material can then be applied directly on the drainage membrane without changing the material, and then the pavement or slab covering can be laid on top of it.

Installation instructions:

- The sealed surface must be thoroughly cleaned so that no damage can occur to the sealing after laying the drainage membrane.
- Lay a non-woven fabric as a protective and separating layer with at least 300 g/m² on the waterproofing.
- The drainage membrane 8-200 is laid horizontally with the dimples to the surface by rolling it out, with the dimple openings facing upwards.
- The drainage membranes have to overlap by 10 cm (four rows of dimples). The drainage membrane can be cut to the required length with a knife, but do not damage the sealing.
- If the laid membranes have to be extended, the connecting membrane is pushed under at least 20 cm from below. The horizontal overlaps must be shingle-like in the direction of the water flow.
- At the edge membrane should overlap the connecting wall or vertical components by at least 10 cm (4 rows of dimples).
- Then install a geotextile as a filter layer over the entire laid surface. The plant substrate can then be applied directly.



Accessories:

ALB-GLUE-WM/310	4751023407302	Elastic glue for waterproofing membrane
ALB-BAT-20/30	4751023407333	Butyl adhesive tape



MADE IN EUROPE

Distributor: SIA "Albau" – Ritvari, Rumbula, Ropazi district, LV-2121, Latvia, Reg.No. – 40103561205



www.albau.eu



www.xbau.eu